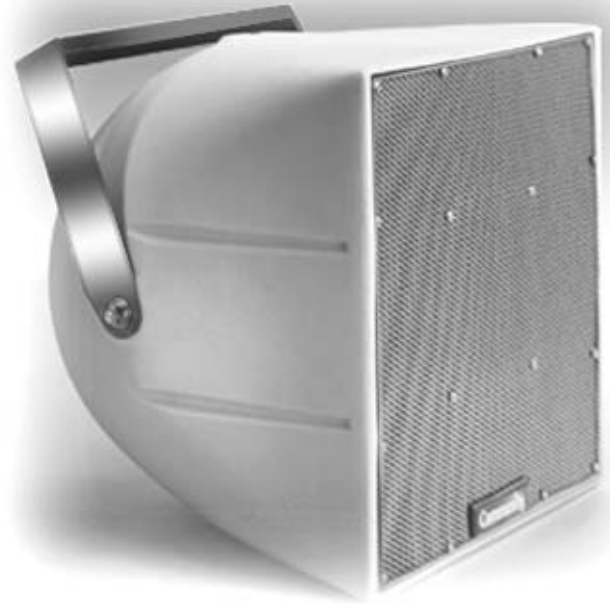


SPECIFICATIONS (See notes 1 and 2)

Loudspeaker Type: 2-way, Horn-loaded co-axial, weather resistant
Operating Range: 90 Hz - 16 kHz
 90 Hz - 16 kHz (+/-5dB)
Max Input Ratings: 200W continuous, 500W program
 40 volts RMS, 89 volts momentary peak
Recommended Power Amplifier:
 420W to 600W @ 8 Ohms
Sensitivity 1W/1m:
 100 dB SPL (100 Hz - 125Hz 1/3 octave bands)
 101 dB SPL (250 Hz - 4 kHz speech range)
Maximum Output: 123 dB SPL / 130 dB SPL (peak)
Nominal Impedances: 8 Ohms
Min Impedance: 4 Ohms @ 11370 Hz
Nominal -6dB Beamwidth:
 90° H (+3° / -27°, 2 kHz - 12.5 kHz)
 40° V (+14° / -2°, 2 kHz - 12.5 kHz)
 100° H x 100° V @ 630 Hz
Axial Q / Di: 18.6 / 12.7, 2 kHz - 12.5 kHz
Crossover Frequency: 1.5 kHz
Recommended Signal Processing:
 70 Hz high pass filter
Drivers: LF (1) 12" weather-treated, Ferrofluid-cooled
 HF (1) 1" exit, Kaladex[®] diaphragm
Driver Protection: PowerSense™ DDP
Input Connection: 12'/ 4m SJOW #16 Gauge
Controls: None
Enclosure: Roto-molded gray polyethylene
Mounting / Rigging Provisions:
 (5) 3/8-16 rigging points
Grille: 3-layer Weather-Stop™
 (Perforated steel, foam, stainless steel mesh)
Required Accessories:
 70 Hz high pass filter
Optional Accessories:
 Pole Mount (ATM PM Series)
 TRC400 transformer
Supplied Accessories:
 SSYR5 Yoke bracket, stainless steel
Dimensions:
 Height: 16 in. / 406 mm
 Width: 16 in. / 406 mm
 Depth: 16 in. / 406 mm
Weight: 35 lb. / 15.9 kg
Shipping Weight: 42 lb. / 19.1 kg

1. Sensitivity: Free field pink noise measurement at 10 ft / 3 m at 25% power; extrapolated to 1 meter and an input of 2.83 volts RMS.

2. Watts: All wattage figures are calculated using the rated nominal impedance.



FEATURES:

- Roto-molded, UV enclosure
- Pattern Control down to 630 Hz
- High Efficiency
- Integral Mounting Points
- High Power Passive Crossover

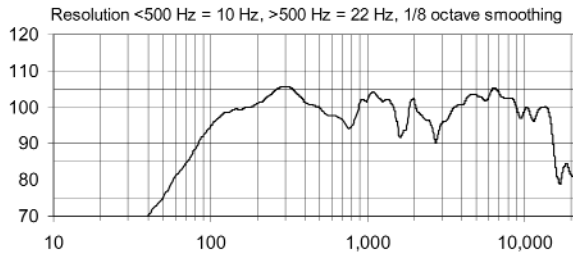
APPLICATIONS:

- Fill Speaker for Stadia, Athletic Fields, Arenas and Race Tracks
- Outdoor Background Music / Page Systems
- Theme and Amusement Parks
- Fairgrounds, Rodeos, Air Shows
- Malls, Cruiseships, Skating Rinks
- Swimming Pools, Convention Centers
- Portable Sound Systems

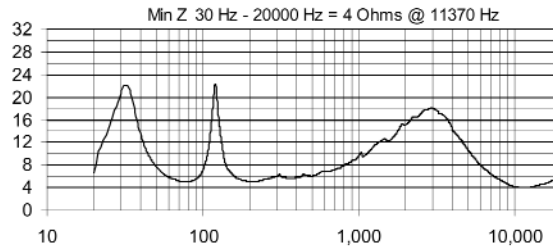
The R.5-94X two-way, full-range loudspeaker system is engineered to provide quality full-range sound projection in a variety of outdoor and indoor applications. Its wide range, smooth frequency response and high efficiency ensures both high fidelity music reproduction and superb projection of clear intelligible speech with very low distortion.

Five year limited warranty.

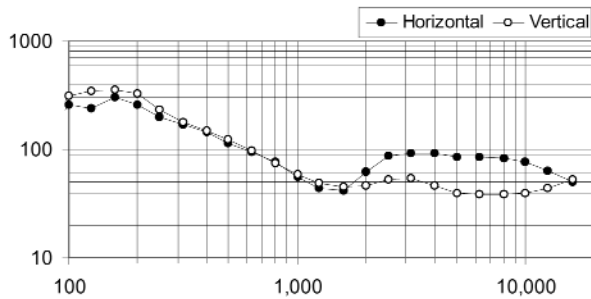
FREQUENCY RESPONSE



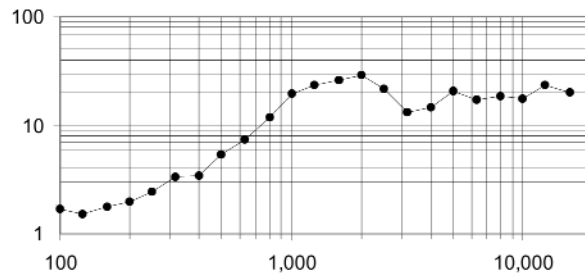
IMPEDANCE (without transformer)



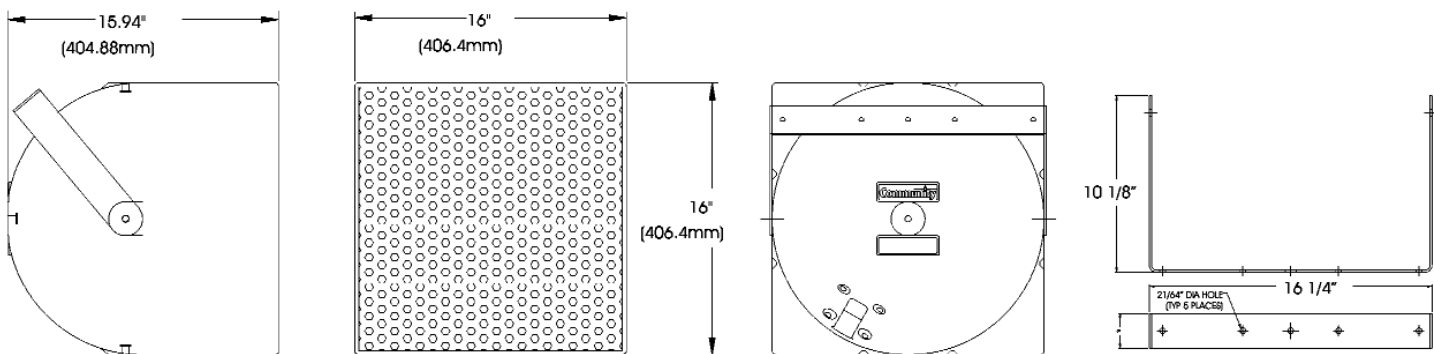
BEAMWIDTH



AXIAL Q



DIMENSIONS



SIDE VIEW

FRONT VIEW

REAR VIEW

YOKE

ARCHITECTS' AND ENGINEERS' SPECIFICATIONS

The loudspeaker system shall be a horn-loaded, two-way, coaxial design consisting of one 12" Ferrofluid-cooled driver and one 1" exit Kaladex compression driver mounted on a horn inside the cabinet. The drivers shall be connected to a passive crossover network with a crossover frequency at 1.5 kHz with driver protection using high positive current coefficient resistors. The cabinet shall be a roto-molded polyethylene enclosure providing weather and UV resistance with three layer weather resistant grille. The input connection shall be one 12' (4m) SJOW #16 gauge cable with stripped ends. The enclosure shall incorporate five 3/8-16 rigging points for multiple mounting options. In addition, the loudspeaker will be supplied with one stainless steel yoke bracket. The loudspeaker system shall have an amplitude response of 90Hz-16 kHz (+/- 5 dB SPL), an input capacity of 40V RMS, 101 dB SPL sensitivity @ 2.83V / 1 meter between 250Hz-4 kHz at a nominal 8 Ohm impedance. The nominal dispersion shall be 90° x 40° over a frequency range of 2 kHz to 12.5 kHz. The dimensions of the enclosure are defined as 16" x 16" x 16" (HWD) at a weight of 37lbs.