

# TANNOY®



ALL WEATHER

ALL WEATHER

ALL WEATHER

ALL WEATHER

## i8 AW

The Tannoy i8 AW is a premium quality All Weather installation loudspeaker based around a 200mm (8") point source, constant directivity Dual Concentric™ transducer. Suited for applications indoors or out, the i8 AW consistently delivers a powerful performance under a wide range of environmental conditions. The cabinet is weather proof to IP33CS in EN60529.

The i8 AW, utilising the same drive unit used in Tannoy's studio monitors, incorporates the latest generation design features including a plastic cone and rubber surround for additional weatherproofing, a dual magnet assembly, and HF Tulip WaveGuide™. The high frequency (HF) and low frequency (LF) sources are coincidentally aligned to a point source. The result is a smooth, uniform frequency response over a wide coverage area, unachievable with discrete, two-way designs in the vertical plane where massive cancellations appear off axis at the crossover frequency. The 90° conical dispersion of the Dual Concentric allows either vertical or horizontal mounting without compromising sound quality.

The optimally tuned, moulded polyethylene enclosure maximizes bass response and tonal balance. The transformer settings on the i8T AW (60, 30, 15, 7.5 Watts) are selectable via a rotary switch located on the input panel of the cabinet.

For simple and effective installation, there is the choice of MB 8 and Omni Series 30.0 hardware, allowing the loudspeaker to blend into almost any setting.

The i8 AW is available in Charcoal or White in these versions: the i8 AW for use in 8Ω operation, and as the i8T AW, supplied with a THP 60 Watt transformer.

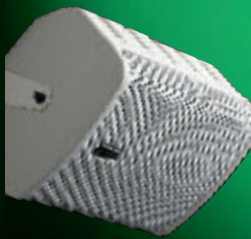
 **DUAL™**  
CONCENTRIC

ALL WEATHER

FRONT DETAIL



YOKE BRACKET



OMNI MOUNT™ BRACKET



DRIVER DETAIL



# i8 AW

## SYSTEM

|   |                                     |   |
|---|-------------------------------------|---|
| System Type                                     | All Weather Loudspeaker             |   |
| Frequency Response <sup>(1)</sup>               | +/- 3dB<br>-10dB                    | 65Hz - 20kHz<br>53Hz                            |
| Recommended Amplifier Power                     | 20 - 180 Watts / 8Ω                 |   |
| Power Handling <sup>(2)</sup>                   | Average<br>Programme<br>Peak        | 90 Watt<br>180 Watt<br>360 Watt                 |
| Sensitivity 2.83 Volts @ 1 metre <sup>(3)</sup> | Anechoic<br>Half Space              | 91dB<br>94dB                                    |
| Maximum SPL                                     | THP 50 Transformer<br>Low Impedance | 109dB (average)<br>111dB (average) 117dB (peak) |
| Wattage Tap Selections                          | i8T AW                              | 60, 30, 15, 7.5 Watts                           |
| Impedance                                       | 8Ω                                  |   |
| Crossover Frequency                             | 1.3kHz - passive                    |   |
| Dispersion                                      | See Beamwidth Plot                  | 90° Conical                                     |
| Driver Complement                               | 1 x 200mm (8") Dual Concentric™     |   |

## CONSTRUCTION

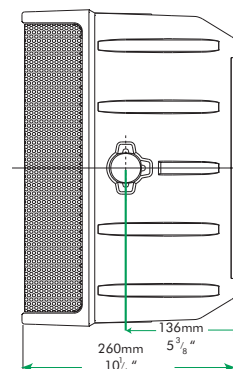
|                  |  |   |
|------------------|--|---|
| Enclosure        | 16 litre polypropylene   |   |
| Finish           | Charcoal or White  |   |
| Connectors       | 1 x Speakon NL4MP<br>2 x 4mm binding posts   |   |
| Fittings         | 1 x 35mm pole mount<br>2 x M8 inserts<br>4 x M6 inserts  |   |
| Mounting Options | MB 8<br>Omni Series  | 2 x yoke fixing points<br>30.0 Series Omni Mount™ bracket   |
| Dimensions       | 388 x 280 x 260mm<br>(15 <sup>3</sup> / <sub>8</sub> x 11 x 10 <sup>1</sup> / <sub>4</sub> " ) |   |
| Weight (each)    | i8 AW<br>i8T AW  | 8.5kg (18lbs 10oz)<br>9.5kg (21lbs)   |
| Shipping         | Quantity   | 2   |
|                  | i8 AW  | 17.9kg (39lbs 5oz)  |
|                  | i8T AW   | 19.6kg (43lbs)  |
|                  | Pack Dimensions  | 450 x 570 x 340mm<br>(15 <sup>3</sup> / <sub>8</sub> x 22 <sup>3</sup> / <sub>8</sub> x 13 <sup>3</sup> / <sub>8</sub> ") |

NOTES: <sup>(1)</sup> Average over stated bandwidth. Measured at 1 metre on axis. <sup>(2)</sup> Long term power handling capacity as defined in EIA standard RS - 426A. <sup>(3)</sup> Unweighted pink noise input, measured at 1 metre in an anechoic chamber

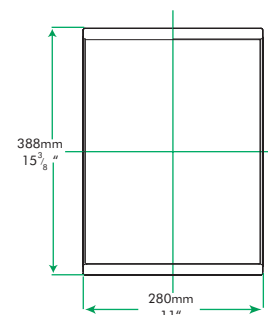
A full range of measurements, performance data, and Ease™ Data can be downloaded from [www.tannoy.com](http://www.tannoy.com)

Tannoy operates a policy of continuous research and development. The introduction of new materials or manufacturing methods will always equal or exceed the published specifications, which Tannoy reserves the right to alter without prior notice. Please verify the latest specifications when dealing with critical applications.

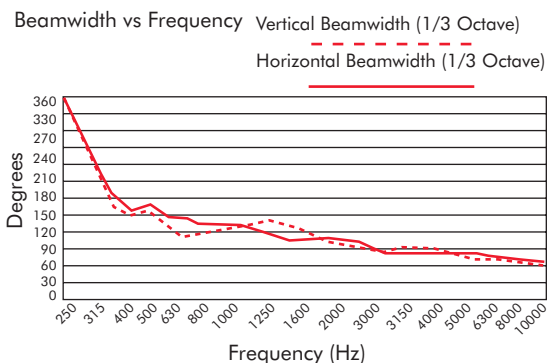
## SIDE ELEVATION



## FRONT ELEVATION



## BEAMWIDTH PLOT



# i8 AW

## APPLICATIONS

- Foreground music & paging systems
- High level music and speech reinforcement
- Theme bars
- Theme parks
- Reception / waiting rooms
- Airports, convention centers, hotels
- Business music systems
- Boardrooms & offices
- Cruise ships
- Retail outlets
- Houses of worship

## FEATURES

- 8" (200mm) point source Dual Concentric™ driver
- 90° controlled conical dispersion for optimum coverage and forward gain
- Weatherproof to IP33CS in EN60529
- Low insertion loss 60 Watt line transformer - for a more powerful and dynamic performance (i8T AW)
- Multi tap switch on input panel (i8T AW)
- Wide, constant directivity dispersion
- High sensitivity
- Magnetic cooling HF
- Yoke & Omni Mount™ mounting options for quick and easy installation
- Five year loudspeaker warranty

## ARCHITECTURAL SPECIFICATIONS

The All Weather loudspeaker shall consist of a 200mm (8") full range, single point source, constant directivity Dual Concentric™ transducer. The transducer shall be mounted into a vented, moulded enclosure weatherproof to IP33CS in EN60529.

The loudspeaker shall be used in 70 or 100 Volt distributed audio systems utilising a high performance transformers with 60, 30, 15, 7.5 Watt taps available respectively. An easily accessible selector switch shall be available on the back panel for selecting settings.

Performance of the loudspeaker shall meet or exceed the following criteria; frequency response 1 metre on axis with swept sine wave shall be 65Hz - 20kHz +/- 3dB, sensitivity shall be at least 91dB (anechoic) for 2.83 Volts @ 1 metre with minimal loss accounted for. The dispersion of the loudspeaker shall be 90° conical.

The driver impedance and maximum power handling (without transformer) shall be 8Ω and 180 Watts respectively. The system shall be designed for use in all weather applications. The enclosure shall be an optimally tuned, vented enclosure, utilising a yoke and pole mount, and shall not exceed the following dimensions: 388 x 280 x 260mm or 15<sup>3</sup>/<sub>8</sub> x 11 x 10<sup>1</sup>/<sub>4</sub>" (HxWxD).

This loudspeaker system shall be the Tannoy...i8 AW

\*70 Volt version only



Tannoy United Kingdom | T: +44 (0) 1236 420199 | F: +44 (0) 1236 428230 | E: [enquiries@tannoy.com](mailto:enquiries@tannoy.com)  
 Tannoy North America | T: (519) 745 1158 | F: (519) 745 2364 | E: [inquiries@tannoyna.com](mailto:inquiries@tannoyna.com)

[tannoy.com](http://tannoy.com)